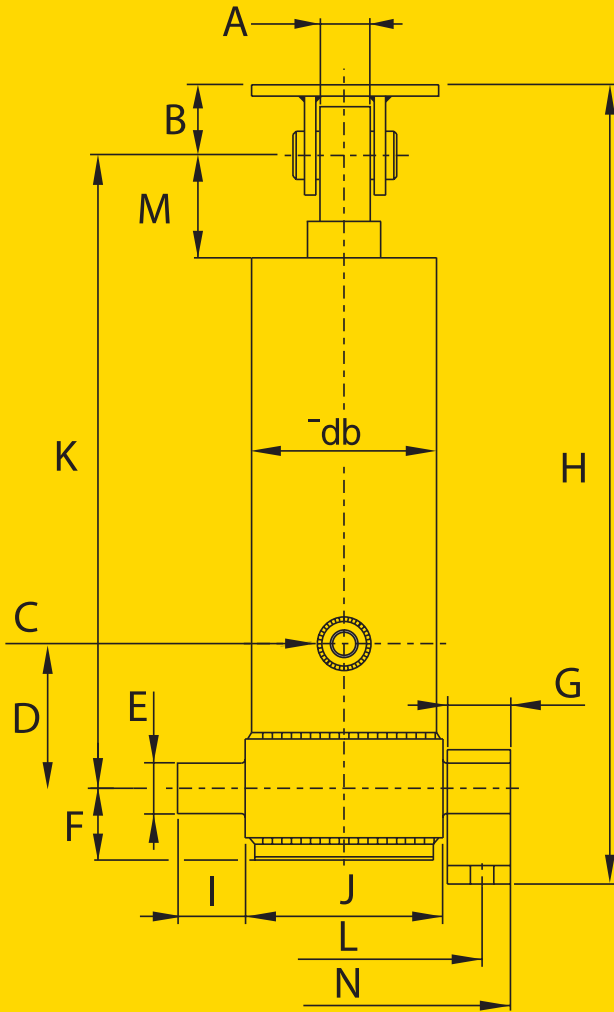
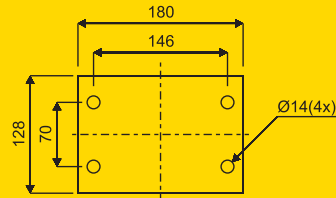


Phone (07) 3273 4155

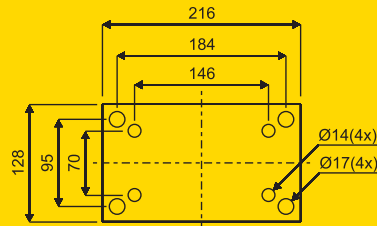
FLASH HOIST FE SERIES



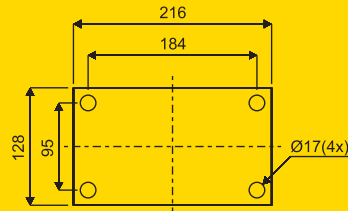
CLEVIS



FE 110 / 129

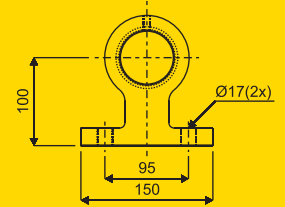


FE 149 / 169 / 191-5

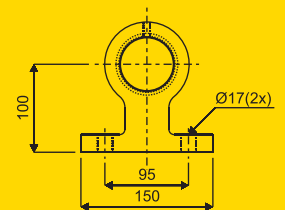


FE 191-4 / 214-4 / 214-5

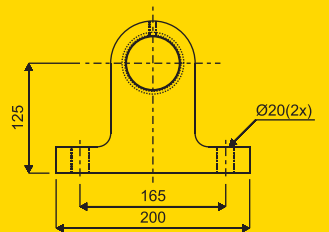
FOOT MOUNT



FE 110

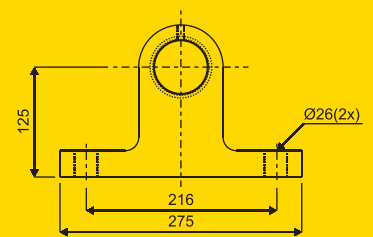


FE 129 / 149

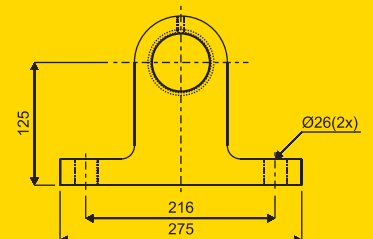


FE 169 / 191

HOIST MODEL	PART NUMBER	NO OF STAGES	STROKE mm	CAPACITY AT 150bar	WEIGHT INCL. FOOTMOUNTS & TEST OIL	TOTAL VOL. LITRES	CLOSED HT. H*mm
FE 110-3-2755	71533112	3	2755	20 T	99 Kg	21	1399
FE 110-3-3205	71533162	3	3205	20 T	108 Kg	24	1545
FE 110-3-3460	71533182	3	3460	20 T	122 Kg	26	1634
FE 129-3-2755	71534112	3	2755	28 T	120 Kg	30	1399
FE 129-3-2980	71534132	3	2980	28 T	126 Kg	32	1474
FE 129-3-3205	71534164	3	3205	28 T	139 Kg	34	1549
FE 129-3-3460	71534182	3	3460	28 T	139 Kg	37	1634
FE 129-3-3880	71534222	3	3880	28 T	159 Kg	42	1794
FE 149-3-4090	71535242	3	4090	40 T	184 Kg	59	1864
FE 149-4-4280	71535262	4	4280	35 T	171 Kg	55	1549
FE 149-4-4620	71535292	4	4620	35 T	180 Kg	59	1634
FE 149-4-6100	71535482	4	6100	30 T	235 Kg	78	2054
FE 169-4-5180*	71536394	4	5180	40 T	247 Kg	88	1814
FE 169-4-6100*	71536482	4	6100	40 T	281 Kg	103	2074
FE 169-4-6500*	71536532	4	6500	40 T	295 Kg	110	2174
FE 169-5-6180	71536492	5	6180	35 T	265 Kg	93	1734
FE 191-4-7220	71537642	4	7220	50 T	395 Kg	158	2387
FE 191-5-6180	71537492	5	6180	55 T	315 Kg	122	1737
FE 191-5-6480	71537524	5	6480	55 T	320 Kg	127	1817
FE 214-4-7220	71538642	4	7220	70 T	468 Kg	202	2382
FE 214-5-7130	71538586	5	7130	60 T	405 Kg	180	1974



FE 191



FE 214

* H closed height is including 20mm pull out
* These hoist are available fully hard chromed

Hyva Alltatec is not responsible for incorrect results obtained with figures in this document. Information is for reference only. For detailed information and for specific tipping capacities against known operating conditions contact Hyva Alltatec.



www.transparts.com.au